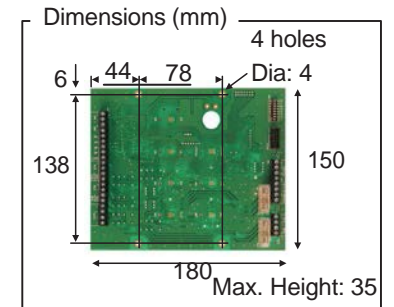
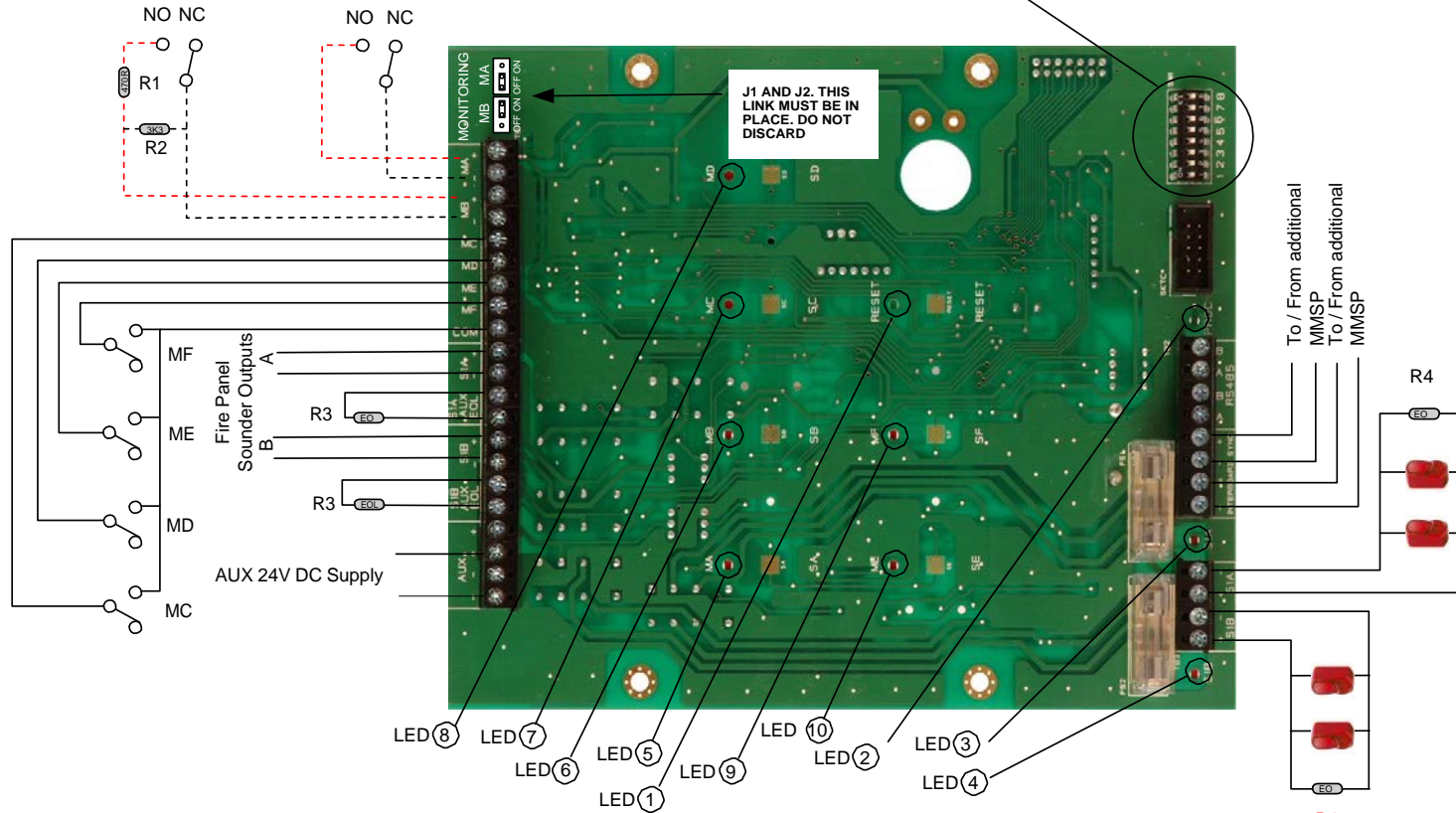


WIRING DETAILS

R1: 470Ω Resistor (Supplied)
 R2: 3K3Ω Resistor (Supplied)
 R3: Panel Manufacturers EOL
 R4: Panel Manufacturers EOL

8-Way DIL Switch
 SW7 & SW8 are used to disable MA and/or MB indicators respectively on the keypad.
 SW1-4 are used to set the time in 'timeout mode' as a field adjustable function—Timeout Mode is a factory set option. See Table 1.
 SW5 & SW6 are not used

'MB' with input monitored for fault
 'MA' with input not monitored for fault



TERMINALS

AUX - / + - 24VDC Input
S1A / S1B AUX EOL - The sounder circuits S1A and S1B are provided with auxiliary EOL terminals. Fit the panel manufacturer's recommended EOL Resistor (R3) here. This suppresses fault signals when an auxiliary message is broadcast.
MA, MB, MC, MD, ME & MF - These six inputs trigger corresponding auxiliary messages. MA and MB can be configured for fault monitoring requiring a 3K3 end-of-line resistor for monitoring (supplied) and a 470R resistor to activate using J1 and or J2. MC, MD, ME & MF are not monitored for faults and activation of the auxiliary message is achieved by connecting the input terminal directly to COM.
INTERBOARD SYNC - These terminals are used to link multiple MMSPs and ensure synchronisation for the default message across all MMSPs.

LED FUNCTIONS

1. (Green) – Power On.
2. (Green – Blinking) - Processor Healthy.
- 3 & 4. (Red) – Any message broadcast on sounder circuits S1A & S1B. Note: If the input to S1A or S1B is energised and LED 3 or 4 is not illuminated, then the fuses should be checked. If LED 3 or 4 is illuminated and the incorrect message is being broadcast, then this normally indicates excessive volt drop (<20VDC).
- 5 - 10. (Red) – Corresponding auxiliary message activated.

Vimpex Limited
 Star Lane, Great Wakering
 Essex SS3 0PJ England
 Tel: +44 (0) 1702 216999
 Fax: +44 (0) 1702 216699
 E-mail: sales@vimpex.co.uk
www.vimpex.co.uk