



## Door Holders, Closers & Fire Door Accessories Wired & Wire - Free Solutions

---

# Door Holders, Closers & Fire Door Accessories

## Wired & Wire - Free Solutions

---

When it comes to building specification, ensuring there are appropriate fire safety measures in place to protect occupants is a top priority.

Wired and Wire-Free Door Holders are arguably the single most important fire safety mechanism, guard against the lethal spread of toxic smoke and fumes – by far the greatest cause of death in fires.

Keeping a fire door propped open is illegal. Makeshift stoppers prevent the closing of the door – allowing smoke and fire to spread throughout the building making it difficult for occupants to escape and become overwhelmed with smoke.

The Vimpex range of Wired and Wire-Free Door Holders and accessories offers the installer the broadest choice of mounting styles and holding power. Mounted onto a fixed surface, these door holders ensure retention of the fire door by means of a smart metallic keeper plate and is interfaced with the fire alarm system.

Door Holders are de-energised as soon as the fire is detected thus releasing the door without a potentially harmful delay. This also allows a door to be safely kept open if needed and automatically closed during a fire.

### MAIN FEATURES

- Choice of holding power, 200-1000 N
- Various styles and mounting methods available including heavy duty, wall mounted and universal units
- Wired and Wire-Free Closers
- Heavy duty, high power versions stocked
- Integrated release button as standard – Remote release buttons available
- Approved to EN 1155 and CE Marked
- Useful accessories such as Smart+Guard door control switch protectors



EN 1155

## UNIVERSAL DOOR HOLDERS

The Universal door holder can be used for many different door holding applications can be either floor, wall or ceiling mounted.

### FEATURES

- 500 N or 1000 N holding force available
- Zero residual force
- 300 mm and 200 mm lengths available as standard
- Alternate lengths also available and made to order
- Approved to EN 1155 and CE Marked



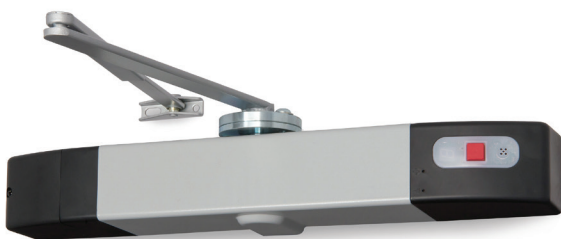
EN 1155

## WIRELESS DOOR HOLDER

This innovative wireless battery-powered magnetic door holder is triggered acoustically when the fire alarm sounders are activated. No external wiring is required and the unit is typically powered in excess of 12 months by 2 standard 'C' battery cells. A manual release button is also fitted.

### FEATURES

- 200 N holding force
- Easily installed and programmed
- Learns the sound of the fire alarm
- Battery life indication and low battery warning
- Programmable for automatic release and re-hold for day/night
- Approved to EN 1155 and CE Marked under the CPR



EN 1155

## ACCOUSTIC FIRE DOOR CLOSER

In place of a traditional door closer, this product is used to hold the fire door open in any position whilst also ensuring the door will close in the event of a fire.

### FEATURES

- Easy, wire free installation and programming
- Free-swing mode makes doors feel light and easy to move
- Learns sound of fire alarm
- Conforms with BS EN1155 and EN1154 and recognised by UK Fire & Rescue Services and the London Fire Brigade

## STANDARD DOOR HOLDERS

Built for flush and surface mounting with a spring-loaded pin ensuring zero residual force.

### FEATURES

- Supplied as standard with 200 N holding force
- Attractive finish, featuring a strengthened cast back box
- Metal enclosure means no heat fatigue
- Available in 230 V ac and 24 V dc



EN 1155

## ECO-RANGE DOOR HOLDERS

The Eco-Range of door holders are hard-wired and allow the legal opening of internal fire doors. They are also fitted with a manual release button allowing the door to be closed without operating a fire alarm.

### FEATURES

- Two holding forces available – 200 N and 500 N
- Available in 230 V ac and 24 V dc
- Approved to EN 1155 and CE Marked
- High Quality and cost effective



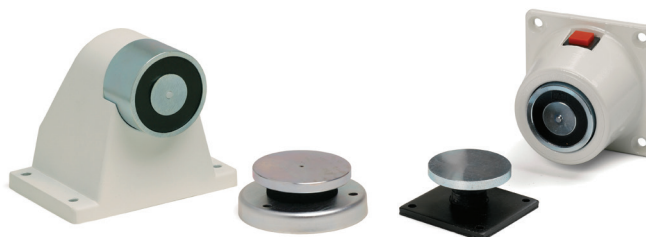
EN 1155

## HEAVY DUTY DOOR HOLDERS

Heavy Duty door holders are designed for areas where accidental damage or vandalism is a problem making them ideal for schools, hospitals, warehouses and car parks.

### FEATURES

- Two versions available: wall and floor mounted
- Heavy duty casting is vandal resistant
- Two holding forces available – 200 N and 500 N



EN 1155



## FIRE DOOR COORDINATOR

The Door Coordinator also known as a selector, ensures that a pair of double doors will always shut in the correct sequence regardless of which door is opened first. If the double doors do not shut in the correct sequence they will not close in the middle.



### FEATURES

- Fire rated and non-fire rated door sets
- Wide range of finishes
- Quality and Fire Certification (CE, UL and ANSI)
- Smart and discrete product
- Easy to fit and low maintenance

## WEATHERPROOF DOOR HOLDER

An excellent solution for harsh environments and outdoor use.



### FEATURES

- EN 1155 Approved
- Robust steel construction - 1200 N holding force
- Sealed against water ingress IP65 Standard
- Available in 230 V ac and 24 V dc
- Supplied with keeper plate

EN 1155



## ACCESSORIES

### DOOR RELEASE SWITCH

Door Release switch which is designed to perfectly complement modern interiors as well as offering privacy for buildings that require this from time to time.

#### FEATURES

- Retractable switch
- High impact plastic box
- Surface or flush fitted
- Easy clean surface



### VPSU SERIES GENERAL PURPOSE POWER SUPPLIES

The Vimpex VPSU 24 series of PSU's are switched mode power supplies and ideal for door holders.

#### FEATURES

- 1.0 A, 2.0 A & 3.0 A versions available
- Up to 7.0 Ah battery capacity on most models
- Highly efficient power conversion – better than 85%
- Constant current battery charging available on most models
- Self-resetting electronic fuse

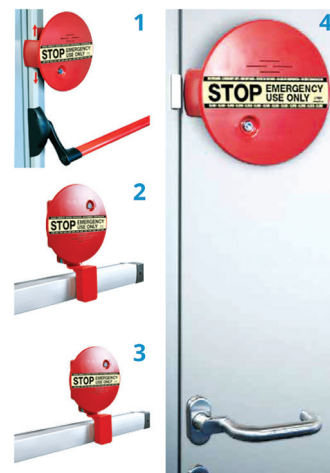


### SMART+SHIELD

Smart+Shield offers a simple cost-effective solution to discourage the misuse of emergency exit doors.

#### FEATURES

- Multiple functions for different applications
- Battery or hard wired
- Different audible levels



Four different solutions, to secure emergency exits in seconds.



COLOURS AVAILABLE:



## SMART+GUARD CALL POINT COVERS

Smart+Guard is a tough polycarbonate hinged protective cover that can easily be installed over a range of call points, emergency switches and other devices to provide protection from vandalism, accidental damage or misuse.

### FEATURES

- Aesthetically pleasing but tough retrofittable protective cover
- Easy to install
- Available in five colours
- Optional battery powered alarm



## IDENTIFIRE AUXILIARY RELAY

Used to provide an output to third-party components or system ancillaries, such as a door holder power supply, to ensure activation/deactivation during alarm situations.

### FEATURES

- 8 Amp Rating
- Dual pole - live and negative both isolated
- Consistent with the entire Identifire Range
- Can be flush or surface mounted







## Vimpex LTD

Star Lane, Great Wakering,  
Essex SS3 0PJ, UK

t: +44 (0) 1702 216999  
e: sales@vimpex.co.uk

[www.vimpex.co.uk](http://www.vimpex.co.uk)

## Vimpex Interguard AB

t: (0) 36 37 10 65  
e: sales@vimpex.se

[www.vimpex.se](http://www.vimpex.se)



Quality System Certificate No. 456  
Assessed to ISO 9001



Fire Industry Association  
BR/3700035/REV 30

We reserve the right to change or amend any design or specification in line with our policy of continuing development and improvement.